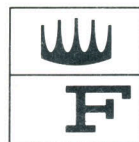


Kitchen Ideas

FROM



FRIGIDAIRE



Inside You'll Find...

	Page
40-years of Kitchen Ideas	3
Modern Kitchen with Country Charm	4-5
Opulence in 10' x 10' 9"	6-7
About Color	8-9
Family Center Kitchen	10-11
Practical Ideas in Appliances	12-13
"Work-easy" Traditional Kitchen	14-15
Ideas for "Built-Ins"	16-17
"Antique" American Kitchen.	18-19
Decorative Ideas	20-21
Extra-space Ideas	22
Basics of Modern Kitchen Design.	23



The central idea is simplicity topped off with a bright, crisp combination of colors. So our cover kitchen is an example of the wonderfully attractive things that can be done without “designers-tricks” or expensive special features. Just tastefully designed cabinets, well-matched Frigidaire appliances, a natural-flow design and color make this kitchen a real standout!



The Frigidaire Family of Dependable Appliances

Frigidaire's 40 years of developing Kitchen Ideas!



1920's

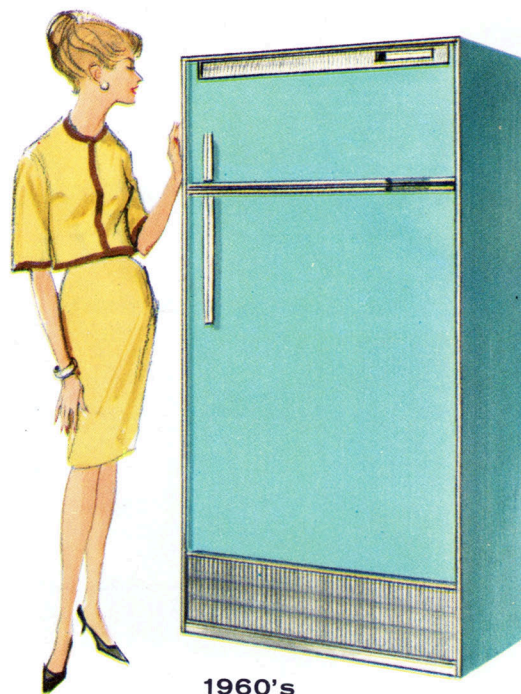
If you see dragons on the front of this refrigerator (1927 model), then your eyes *are* in focus. Hand painted serpents and reptiles were present in kitchen decorating back in the roaring '20's.

And believe it or not, they represented a styling advancement. You see, the very first Frigidaire Refrigerators had to look exactly like the austere oak cabinet ice boxes they replaced. If they had looked like anything else, the women of that era simply wouldn't have accepted them.

Today, of course, women's tastes in kitchen and appliance styling have become sophisticated. And the goal of Frigidaire and General Motors stylists is not just to keep up with popular taste but stay ahead of it. They say that their job is to provide appliances that will stay looking like new long, long, long after delivery day (and they keep running like new for many, many years, too).

We didn't have to look back very far into the history of Frigidaire to find some good examples of this. The Frigidaire Sheer Look was developed in the late 1950's. Its neat, trim lines and the built-in appearance were quite a contrast to the then-popular round-shouldered look. And today, the Sheer Look is *the* leading styling idea in the industry.

Also in the '50's, Frigidaire stylists saw a *colorful* future for American kitchens. So they broke from



1960's

industry tradition and started *mass-producing* appliances in matched colors. And they sold them for the same price as white.

And Frigidaire was among the first to give its appliances a very definite family resemblance. Refrigerator, Freezer, Range, Washer, Air Conditioner and all the others go beautifully together.

Developments like these don't just happen. Most came about through extensive experimentation with appliances and model kitchens. Perhaps you remember the General Motors "Kitchen of Tomorrow" which toured the country with the "GM Motorama." Or you may have recently seen one or more of Frigidaire's "Idea Kitchens." These are developed (with assistance from Frigidaire) by editors from such magazines as *American Home*, *Better Homes & Gardens*, *Good Housekeeping*, *Living for Young Homemakers* and *McCall's*. They've all played a part in the continuing development of Frigidaire styling and convenience features.

In this book, you'll see many examples of Frigidaire's contribution to modern kitchens. But primarily this is a book of "ideas," ranging from kitchen layouts to incidental decorations. And they're picked from actual kitchens in homes today as well as model kitchens. We hope you find many ideas which are useful to you in your present kitchen or kitchen-to-be.



Photographs and kitchen design by McCall's Magazine

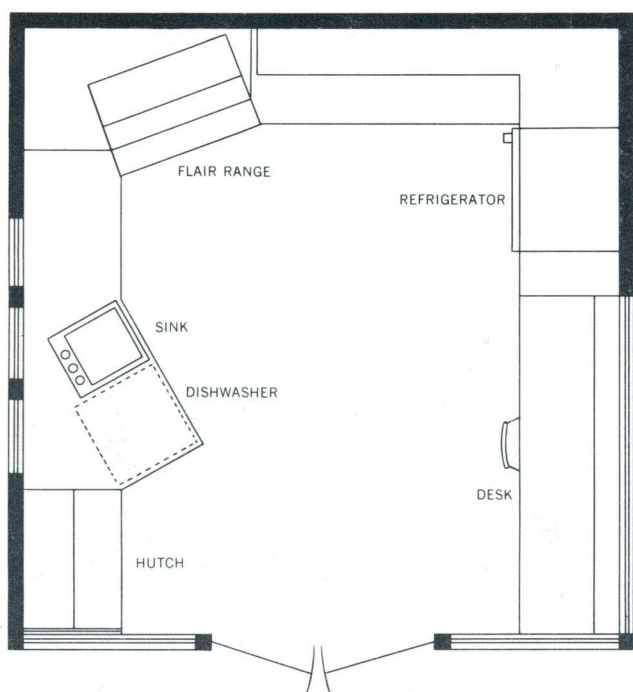
Here's country charm in a kitchen that goes anywhere!

One step across the threshold of this "Beautiful Ohio" kitchen and you're back in the world of butter churns, salt pork and *real* pie crust. But it's all an illusion calculated to charm you.

There's not a single piece of outmoded equipment here. In fact, this kitchen contains some of the

most up-to-date conveniences you'll find anywhere.

That feeling of cozy country charm is created through a combination of French Provincial cabinetry, dominant blue color, touches of decoration and appliances that blend with, rather than interrupt, the flow of the overall kitchen design.



The efficient "U" shape of this kitchen means you can pack it all into a space just 14- by 14-feet. With minor changes it can be adapted to an even smaller area or an "L" shaped space.

Frigidaire Flair electric range is angled across the corner. This utilizes often wasted corner space and provides even greater access to the Roll-To-You cooking top. This is not a built-in appliance, yet it looks built-in. The cooking top is completely concealed when closed and lined up with counter top and cabinet fronts. Flair sits on a custom cabinet like this one or on its own optional metal cabinet.



This desk is conveniently placed under the big picture window for daydreaming. And once you've enjoyed the convenience of doing your meal planning, telephoning, and recipe filing at your own desk, you'll never again want a kitchen without one. The refrigerator is another example of the built-in look in free-standing appliances. The cabinet adjacent has a special plush lined drawer for silverware and special drawer for storage of soft drinks and other large bottles. Both are lockable.



This old fashioned hutch certainly adds a quaint decorative touch. And it's so practical! The drawers are really roll-out trays, just right for place-mat size linens stored flat and ready for use. The angle of the adjacent counter forms a "private" corner for the hutch and at the same time makes the Frigidaire dishwasher all the more accessible to the sink and work counters.

Opulence in 10' x 10'-9"

Rich, deep-toned fruitwood cabinets offset by Snowcrest White and brushed chrome Frigidaire Appliances give the Hayward Thomas' kitchen, Dayton, Ohio, the unmistakable mark of well being. Yet there's nothing outlandishly expensive in the whole room.

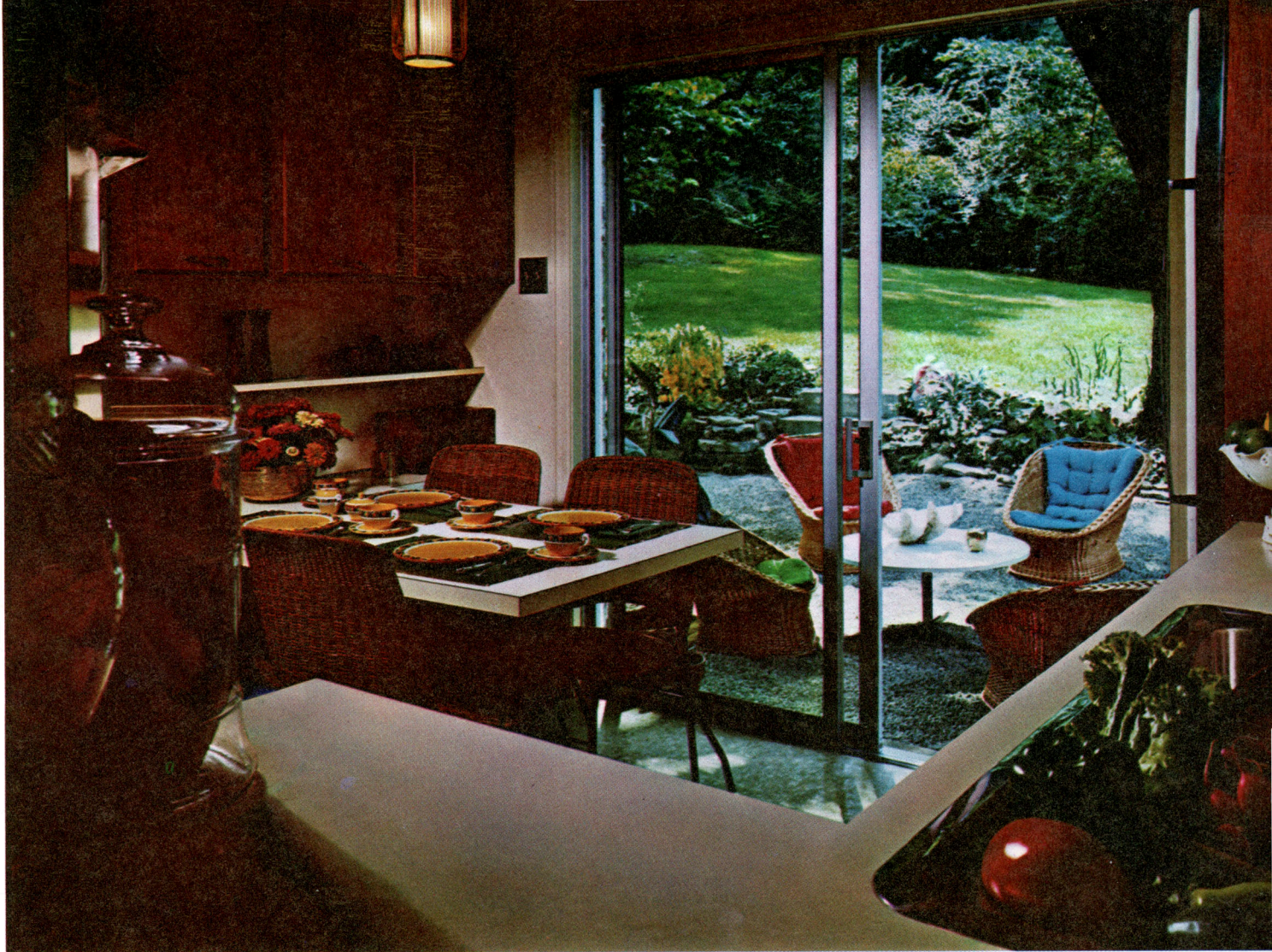
They've used a free-standing refrigerator-freezer saving perhaps \$200 over the cost of "wall" refrigerators. The elimination of soffits above the wall cabinets (separating entry hall from kitchen) repre-

sents another saving of many dollars. And, used as a resting place for decorative glassware, the "open soffit" adds to the expensive look of the kitchen.

And again you see the fabulous Flair electric range. It's just "sitting there" like a conventional range yet it looks "built there." And notice how Flair is in keeping with the compactness of this kitchen. Yet it gives Mrs. Thomas two ovens, four surface units and a variety of automatic conveniences.

Photographs Copyrighted 1961, Curtis Publishing Company.





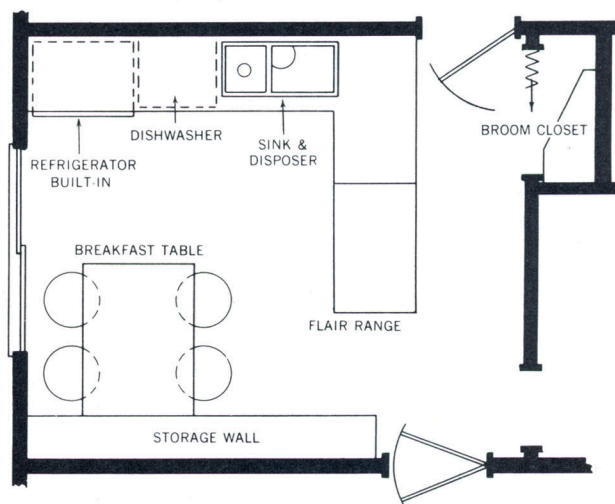
Ever looked out your kitchen window and wished for a view like this? Well that's exactly what Mrs. Hayward Thomas of Dayton, Ohio did. And the possibilities she saw gave her the urge to remodel.

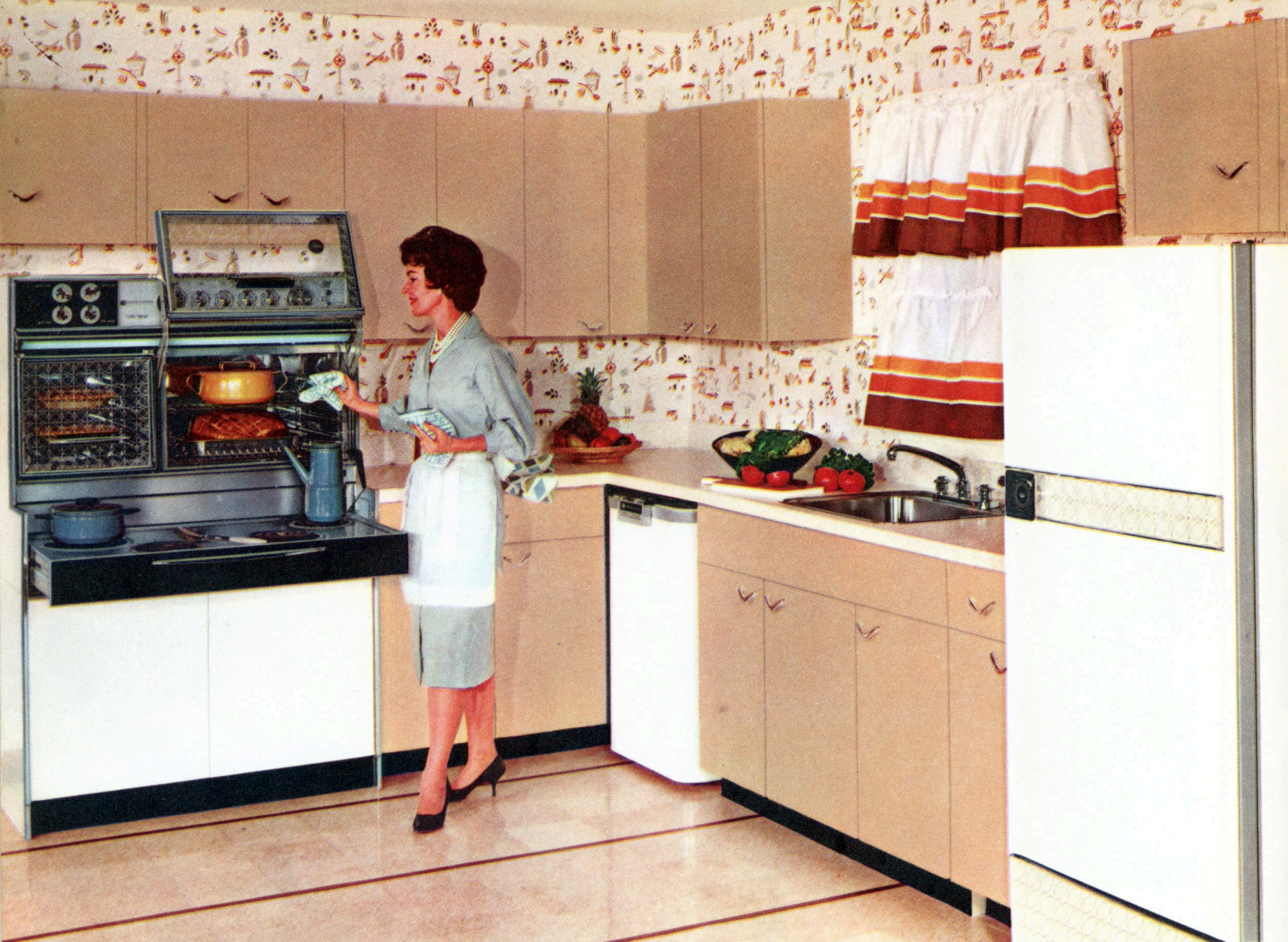
Of course, the spread of green trees and the plush lawn were already there. But everything else is new. Big sliding glass doors replaced the wall with the small window. The beautiful patio is just a leveled

area, covered with washed gravel and enclosed by a low border wall of flagstone and flowers.

Almost as unusual as the patio outside is the dining table inside. It's supported by a standard 12-inch wall cabinet. So, under-table space is utilized for storage! The table also flows right into the work counters of the adjacent storage wall so it can double as an extra counter top, too.

Originally, this kitchen also served as a back entry way and "hall" to the rest of the house (as do many kitchens in older homes). So while Mrs. Thomas was thinking about opening the view onto the back yard, she was also thinking of ways to eliminate a kitchen traffic problem. An island of cabinets and the Flair range did the trick. It shielded the kitchen from incoming, outgoing children and at the same time kept kitchen clutter out of the passageway leading to the rest of the house.





Metal cabinets, simple decorations, and a floor plan common to thousands of older American homes, yet this kitchen looks right up to date! The reason? Sheer Look appliances and fresh paint!

MAYBE YOU DON'T EVEN HAVE TO REMODEL —

Just put in new Frigidaire Appliances and “sprinkle” lavishly with color!

Far be it for us to sell short the beauty and convenience of new kitchen cabinets. If you can afford them, by all means get them.

But if your budget says “no” to new cabinets and a complete remodeling job, take heed of this advice.

The quickest, simplest way to modernize is to buy one or more Frigidaire appliances! Replace that old stove with Flair, the world's most beautiful range. Replace your refrigerator with a new Sheer Look

refrigerator-freezer. Each Frigidaire appliance you add makes your kitchen that much more modern. Then, put fresh paint on existing cabinets and walls. Chances are, your kitchen will look fresh, new and completely remodeled.

And this kind of “remodeling” need not be done all at once. *All* Frigidaire appliances have a welcome family resemblance. The range or refrigerator you buy later will harmonize with appliances of today. So add on as the budget says, “yes”.

HARMONIZE WITH THE Frigidaire Color Quartet...

A "wrong" shade in a kitchen color scheme is as irritating as a sour note in a symphony.

So Frigidaire Color Stylists "auditioned" many, many colors before deciding on the quartet below. The colors were auditioned for mutual compatibility. They were checked for harmony in a variety of kitchen decors. And they were even screened for their ability to blend in with a wide range of living- and dining-room furnishings

so they could be used freely in open-plan kitchens.

And finally, color stylists with the cooperation of four famous paint manufacturers, developed a Frigidaire Color Chart. With this as a guide, your paint dealer can give an exact match or harmonizing color for a Frigidaire Color. You just can't go wrong. The Color Quartet gives you perfect color harmony throughout your kitchen and does it so simply!

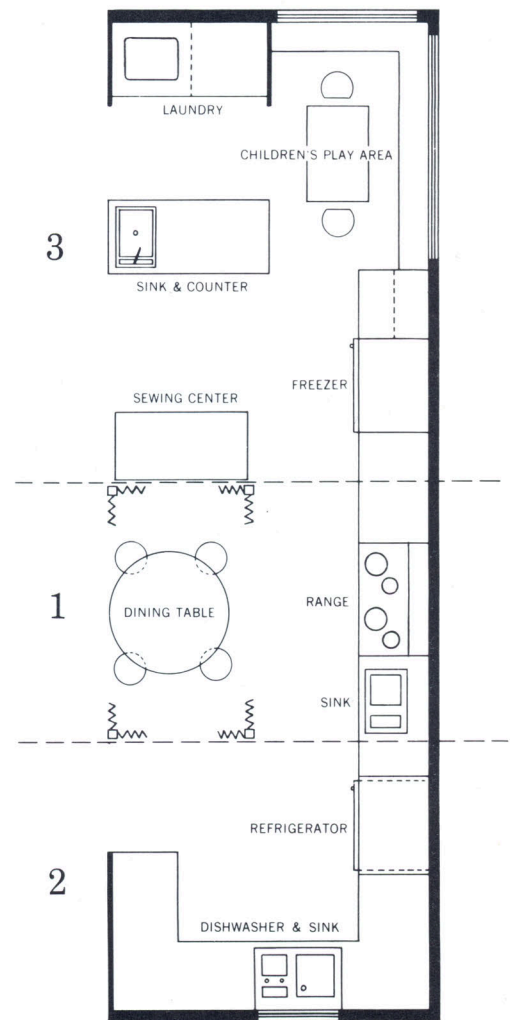
	TURQUOISE	SUNNY YELLOW	MAYFAIR PINK	AZTEC COPPER
MIXING DIRECTIONS FOR PAINTS FROM THESE COMPANIES				
COLORIZER To Match	Super Gloss Enamel #17D 25.	#9C 15.	Super Gloss Enamel #1C 10.	Gallon— Deep Base 1-5190 1-5390 1-5360 2-6190 Quart— Deep Base 1-5170 1-5370 1-5340 1-6180
To Harmonize	17D 33 (Aqua Green), 11E 31 (Vibrant Green), 4A 1 (Flesh Pink), 16C 15 (Iceberg).	8C 15 (pale yellow), 20C 14 (sky blue), 6B 27 (beige), 6D 32 (tan).	2C 9 (soft pink), 11B 19 (pale green), 3C 18 (Lt. Rose Mauve), 19C 21 (Horizon Blue).	5B 8 (Meerschaum), 4A 7 (Bermuda Pink), 11E 31 (Vibrant Green), 17D 33 (Aqua Green).
GLIDDEN To Match	1 gal. #4663 Smoky White Spread Lustre... mix with 7 1-oz. tubes #1784 Green Dramatone Tinting Color and 1 1-oz. tube Black Dramatone Tinting Color.	2 qts. #4641 Crocus Yellow Spread Lustre. 2 qts. #4600 White Spread Lustre... mix with 1 1/4-oz. tube Light Green Dramatone Tinting Color.	1 gal. #4663 Smoky White Spread Lustre... mix with 3 1/4-oz. tubes #1787 Ruby Red Dramatone Tinting Color.	3 qts. 1263 Botany Brown Japalac. 1 qt. 1268 Coral Pink Japalac.
To Harmonize	SPRED SATIN: Medallion Gold, Light Apricot, Spray Blue, Blossom Pink, Pebble Beach, Confetti Yellow. SPRED LUSTRE: Medallion Gold 4672, Peach Glow 4605, Zircon 4660, Pink Haze 4665, Pebble Beach 4667, Springtime 4655.	SPRED SATIN: Blue Azure, Pinefrost Green, Moonmist, Silver, Turquoise, Biscayne Blue, Bone White. SPRED LUSTRE: Blue Ice 4662, Woodland 4657, Plaza Gray 4664, Caribbean 4648, Biscayne Blue 4677, Smoky White 4663.	SPRED SATIN: Blue Azure, Sherwood Green, Moonmist, Bone White, Aquaglow, Cotton Candy. SPRED LUSTRE: Blue Ice 4662, Sherwood Green 4679, Plaza Gray 4664, Smoky White 4663, Aquaglow 4678, Cotton Candy 4643.	SPRED SATIN: Confetti Yellow, Aquaglow, Pale Ivory, Spray Blue, Light Apricot, Pebble Beach. SPRED LUSTRE: Springtime 4655, Aquaglow 4678, Congo Ivory 4651, Zircon 4660, Peach Glow 4605, Pebble Beach 4667.
MARTIN-SENOUR To Match	Colorobot—4R62, 17R153 Jet Blender—1JR399, 8JW323.	Colorobot—6R72, 17R09. Jet Blender—1JR520, 8JW17.	Colorobot—16R89. Jet Blender—8JW127.	Colorobot—22R74 (coordinating color). Custom Color—No. 403.
To Harmonize	Aqua, Azure Blue, Acquamist, Celery, Antique White, Fawn, Pistachio, Bone.	Pale Lemon, Sunlight Yellow, Celery, Antique White, Nomad Gold, Moss, Maple Sugar, Nectarine.	Pink Lilac, Cherub Pink, Celery, Antique White, Fawn, Willow Green, Heather, Grape.	Fawn, Rose Beige, Celery, Antique White, Aqua, Pistachio, Nectarine, Shell Pink.
PITTSBURGH To Match	Maestro Colors Color 2P34.	Maestro Colors Color 25P23.	Maestro Colors Color 13P24.	
To Harmonize	SATINHIDE ENAMEL: Bone White 60-136, Turquoise 60-135, Pink Chiffon 60-139, White 60-6, Peach Glow 60-140, Seafoam Green 60-116.	SATINHIDE ENAMEL: Como Blue 60-124, White 60-6, Eye Rest Green 60-121, Dusk Gray 60-137, Bone White 60-136.	SATINHIDE ENAMEL: Frosted Mint 60-143, White 60-6, Bone White 60-136, Dusk Gray 60-137, Como Blue 60-124.	SATINHIDE ENAMEL: Peach Glow 60-140, White 60-6, Turquoise 60-135, Pink Chiffon 60-139, Bone White 60-136, Sunny Yellow 60-112.

Most of these paint manufacturers offer a variety of finishes ranging from flat wall paint to gloss and semi-gloss enamels.

Not just a kitchen, *a family center* for work (and play)!

One click of the camera shutter couldn't take in the whole expanse of this large kitchen, so here it is in 3 parts!

Designed by the editors of Good Housekeeping.



You need a lot of space for this kitchen — it measures 9' 6" x 29'! But it's space well spent considering its multiplicity of use. Also, this plan is flexible enough to permit installation in other shaped rooms.

PART 1

The "Pavilion"! This unusual 4-poster eating area adds an interesting decorative element. It also gives diners the feeling of privacy in this large, multi-purpose room. Just a step away from the table is the cooking center with its spacious double-oven electric range. It's an easy-to-install free-standing model but notice how naturally it blends with such characteristically built-in elements as the custom-made exhaust hood.



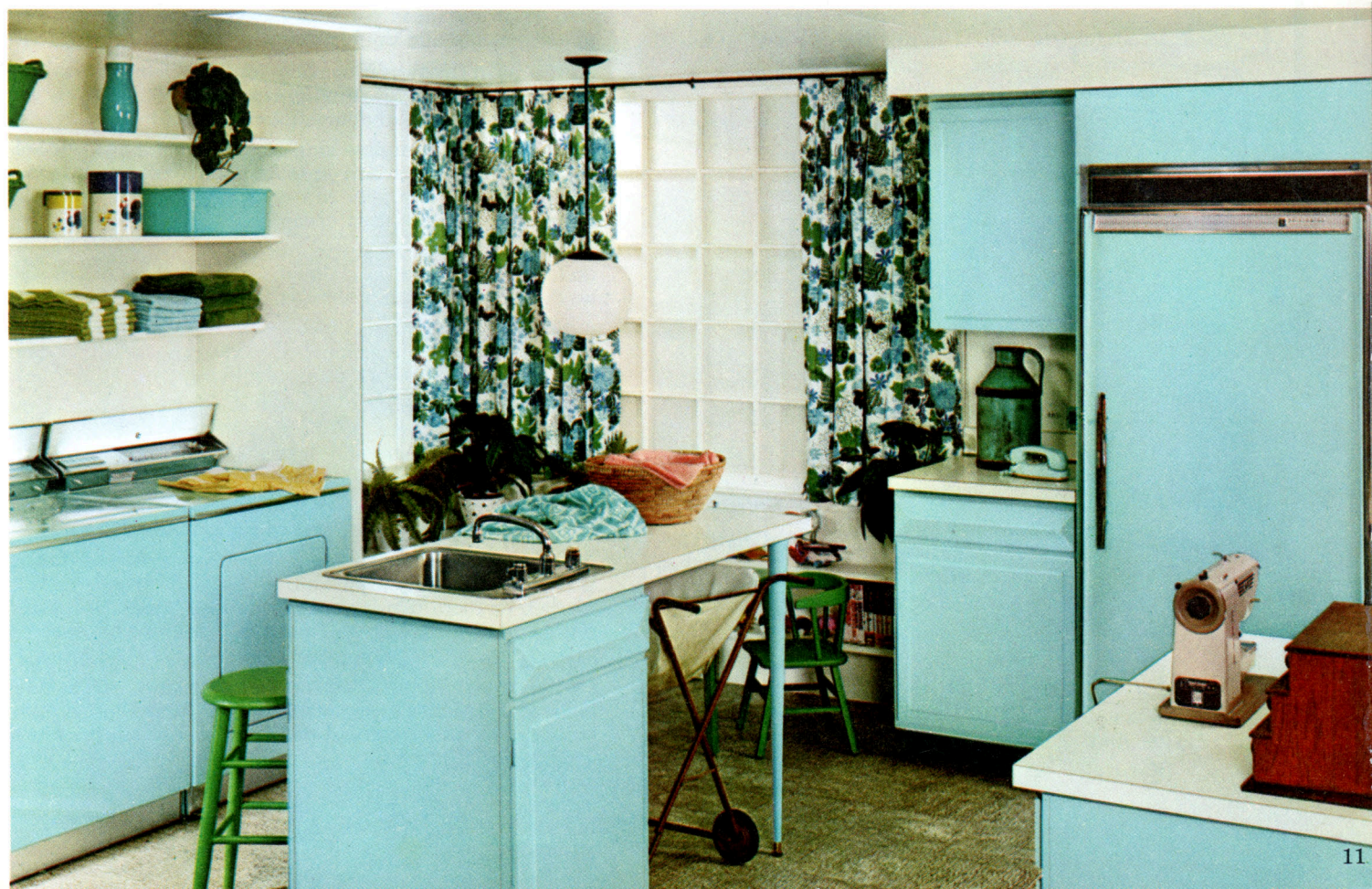
PART 2

The "Periphery Kitchen"! Or some people might call this area the butler's kitchen, man's mixing center, or clean-up center. It has its own sink with built-in food waste disposer, an undercounter dishwasher and loads of extra counter and cupboard space. Notice how the two kitchen areas share the same refrigerator. And this is a Frost-Proof model — requires no defrosting, not even in the freezer section.

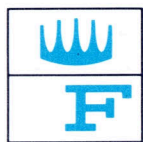
PART 3

The "Laundry Center — Plus"! Primarily, this is a laundry room. But notice how they've tucked the Automatic Washer and Dryer back out of the way in their own built-in enclosure (with storage shelves). The mobile laundry cart "parks" underneath the counter section of the "island" sink. This leaves plenty of room

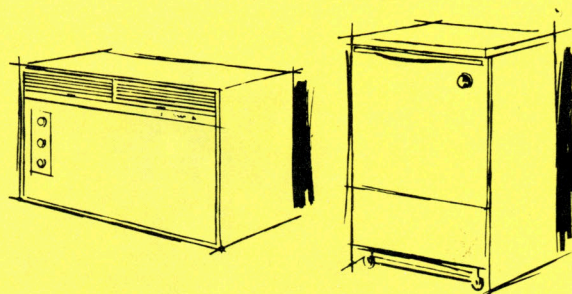
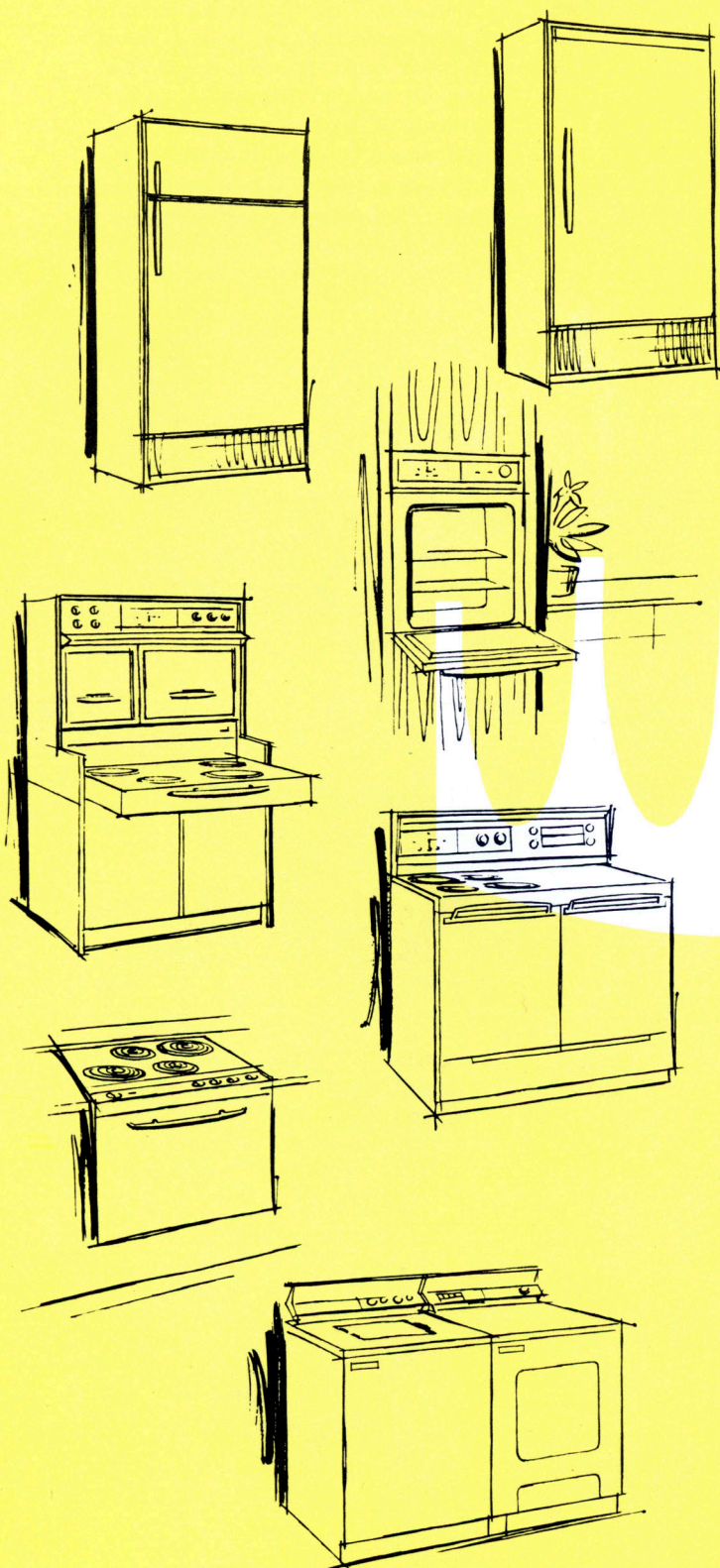
for a sewing center for Mom plus a playroom for the children. That playroom is equipped with child-size table and chairs, chalk board and toy cupboard! And there's even room in this section for that supermarket of a food freezer! It holds up to 588 pounds of frozen food in perfectly safe zero zone cold.



WE'VE AN IDEA YOU'LL FIND EXACTLY WHAT YOU WANT FOR YOUR KITCHEN IN THE



Frigidaire Family of Dependable Appliances!



Refrigerators — choose from as many as a dozen and a half different models in sizes from nearly 10- to over 14-cu. ft. — many two-door models (including Frost-Proof) with freezer section above or below. Left hand doors optional. Porcelain Enamel exterior finish optional on some models.

Freezers — a full line, including some Frost-Proof models. Capacities ranging from 389 lbs. frozen food to 718 lbs. Upright and chest types.

Electric Ranges — a baker's dozen (13) to choose from. 30- and 40-inch models plus compact "apartment" 21's. Double or single oven models, divided workspace cooking tops or surface units clustered to one side.

Flair Electric Ranges come in choice of 30- and 40-inch models, single and double ovens. Flair Wall Ovens, too!

Built-In Wall Ovens and Cooking Tops — a complete selection to help you tailor-make the cooking center to fit your work pattern and cooking volume.

Compact 30" — complete single-package cooking centers (cooking top and oven combined) that build right into standard base cabinets. Match other Frigidaire Appliances as well as kitchen decor.

Automatic Dishwashers — a number of models for easy undercounter installation plus top-loading mobile dishwashers and the famous Frigidaire Dishmobile!

Automatic Washers — a dozen or more models with Sheer Look styling that matches other Frigidaire Kitchen Appliances. No bolting down required.

Electric and Gas Dryers — matched model for model in styling, convenience and performance with Frigidaire Washers. All washers and dryers are 27" wide.

Electric Water Heaters — selection of capacities to meet different size families' needs in both table top (ideal for kitchens, laundry room) and upright models.

Room Air Conditioners — in a wide range of capacities that will efficiently cool and dehumidify any home or kitchen or room. Do-it-yourself standard window installation or through-the-wall models. Some with heating.

Framing Kits — make building-in of Frigidaire Refrigerators and Upright Food Freezers a snap. With the help of Frigidaire instruction sheet and a few simple tools, many home-owners do the job themselves.

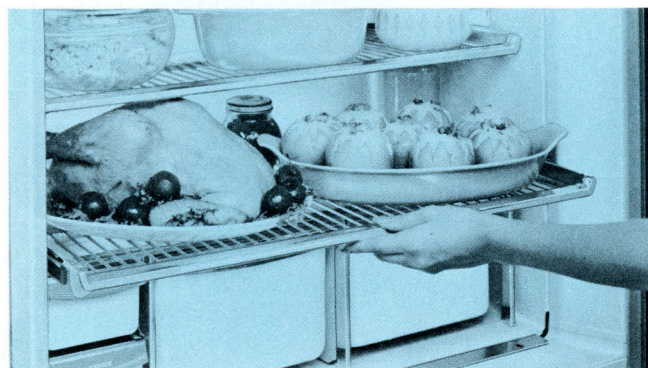


Instant ice service! Exclusive Flip-Quick Ejector pops cubes out at a touch. Ice Server stores 80 cubes. Pick out one or enough for a party! Standard, usually, on Frigidaire Imperial Refrigerators. Optional on others.

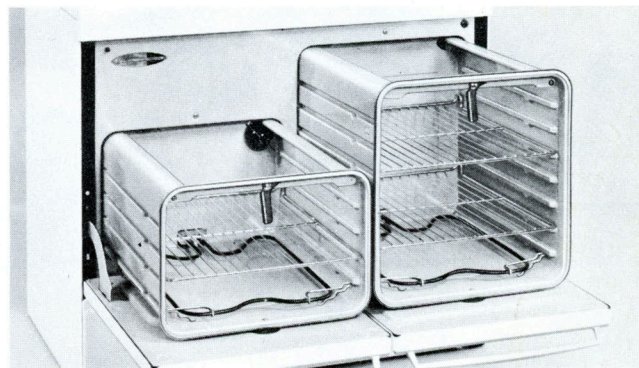


No frost — with exclusive Frigidaire Frost-Proof refrigerating system. You'll never even see frost on packages or freezer walls. No defrosting, ever, in Frost-Proof refrigerator-freezers and some food freezers.

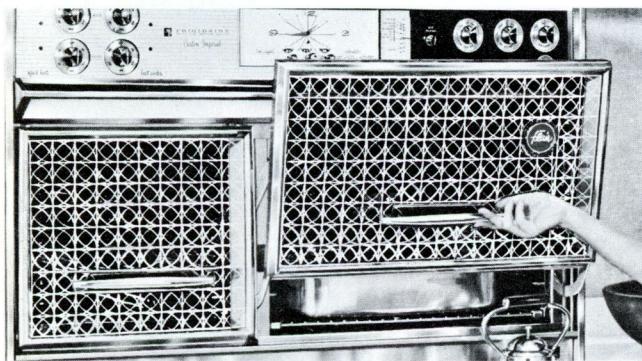
Practical Ideas *for kitchen convenience!*



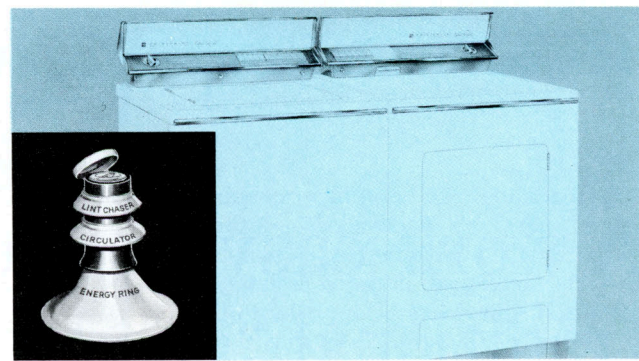
Reach back-shelf foods the easy way. Whisper-quiet Roll-To-You shelves slide out smoothly. And they're full-width, full-depth — don't waste space! Lift out for cleaning. One or more in many models.



World's only Pull 'N Clean Ovens are found in many Frigidaire Electric Ranges! These remarkable ovens glide out for easiest cleaning you've ever seen. Ask your dealer to demonstrate them now.



Exclusive Glide-Up Glass Doors on Flair Electric Ranges are completely out of the way when open. Cooking top rolls to you for use, slides back out of sight when not being used. Dependable Cook-Master Automatic Oven Control with *separate* minute timer. And (on Custom Imperial Models) Broiler Grill Control which lets you "dial the doneness" of steaks, plus Meat Tender which lets you "dial the doneness" of roasts.



Patented 3-Ring "Pump" Agitator — today's most advanced washing action. It bathes deep dirt out without beating. Gets clothes cleaner, cleaner, cleaner!

Exclusive Filtrator in some Frigidaire Dryers disposes of moisture and lint automatically — *without* plumbing or venting. It saves up to \$20 on installation. And all models have a no-stoop Lint Trap on the door plus Flowing Heat that dries clothes faster, safer than sunshine!



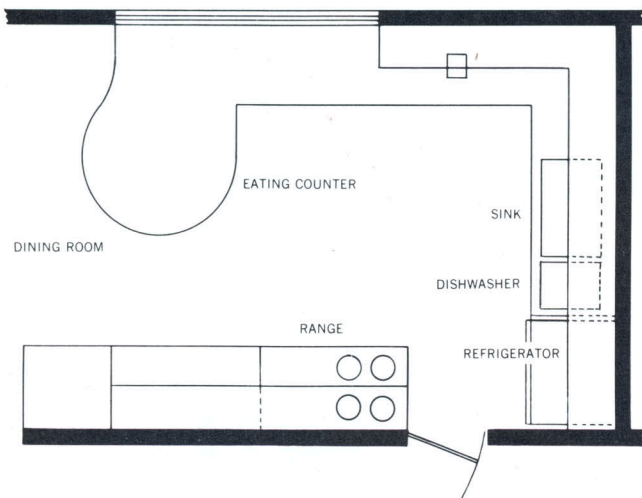
Photographs by "Family Circle."

A work-easy kitchen with traditional "good manners."

This kitchen puts a lot of beauty into a functional sweep of work counters, and efficient arrangement of appliances. It has a bright and breezy, over-sized window, soft-toned cabinets, delicately patterned wall paper and a floor covering that takes you, visually, right into the carpeted dining room.

In other words, this open-plan kitchen does just exactly what its owners, the Ira Hawks of Dayton, hoped it would. It blends in with the rest of the house, which is decorated in a traditional motif; and at the same time it provides the kind of efficiency industrial engineers might envy.

The open plan has the advantage of easy access to the dining room. But the designers also wisely included an entrance at the far end from the main hallway. So you can get into the kitchen without "tracking up" a dining room set for company entertaining. The kitchen measures 10' 6" x 16'.



The friendly eating counter angles out into the room, tactfully avoiding the problem of diners seated facing a wall. This design also provides a very useful serving or buffet counter for the adjacent dining room.

Often, corners go completely to waste as far as storage is concerned — but not in this kitchen. The corner base cabinet has clever lazy susan (rounded) shelves which utilize nearly the whole corner area. And when you push either door the shelves swing out, bringing stored items right to you. So convenient!



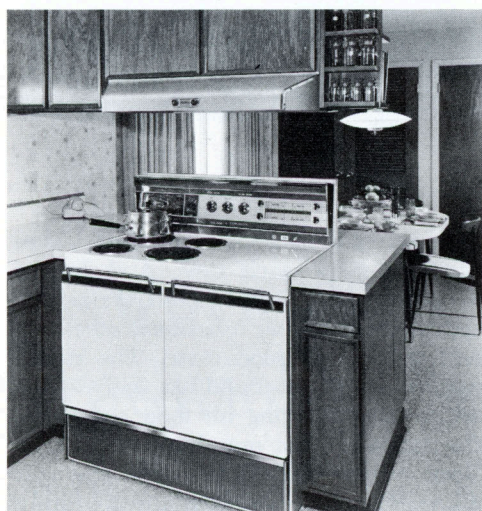
Compact grouping of appliances saves countless steps each day. And in the manner of the kitchen itself, Frigidaire Appliances combine functional efficiency with traditional good taste. The refrigerator is Frost-Proof and has shelves that roll to you, bringing all food out front. The range has not one, but two Pull 'N Clean ovens. And, notice how the soft Mayfair Pink of the appliances complements the soft-toned fruit wood cabinets. Today, the idea of complimenting, harmonizing and even contrasting appliance and cabinet colors is more popular than the perfect match of a few years ago.

"Built-in" Ideas

...using free-standing
as well as built-in appliances



Addition of a knick-knack cupboard at the end of the "L" completely builds in the refrigerator.



Free-standing electric range nestles into this island arrangement of cabinets. And notice how these cabinets back up to buffet cabinets in the eating area forming a convenient pass-through.



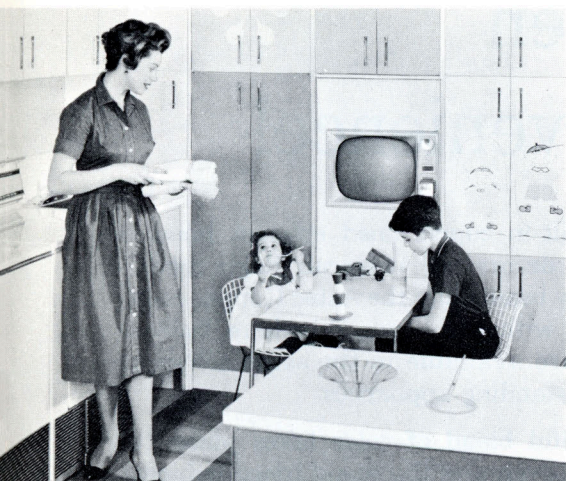
Frigidaire Flair Range mounted on pedestal rather than base cabinet creates an unusual effect and blends right in with this ultra-modern, open plan kitchen.



Stored cans and jars are easily accessible from either side of this unusual roll-out storage cabinet. And it rolls on casters anywhere in the kitchen for loading, unloading or use as extra counter space. Park it neatly under the work counter when not in use!

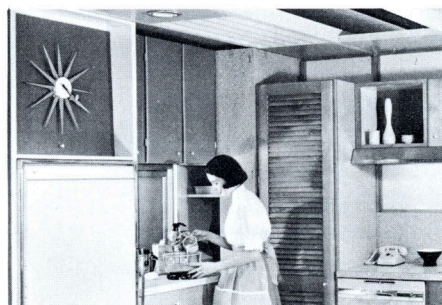
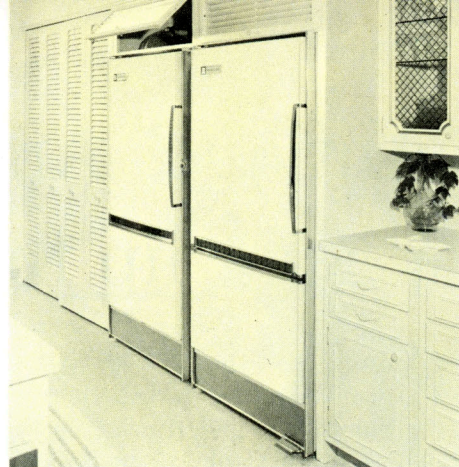


In this kitchen, designed by the editors of *American Home*, shallow base cabinets utilize space under the work counter for storage, yet leave room for sitters' knees. These cabinets need not be specially made. Use regular wall cabinets set on base platform and move cabinet handles to the top of the doors.

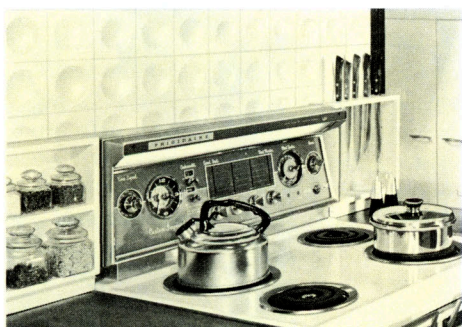


This disappearing play table, when folded up against the wall, serves as a chalkboard, useful as a drawing board for children and shopping reminders for Mom. Then when you want an extra table or work counter, just pull the chalkboard down and you have it!

Here's a complete refrigeration center. The refrigerator-freezer and the separate freezer (both completely Frost-Proof) are built right into this storage wall. Even the space above is put to use for storage. Wood louver doors permit air circulation.



Decorative clock helps complete the built-in look of this refrigerator. Mounted on a perforated board it permits necessary air circulation, and it's hinged to provide additional storage.



Because they're made of wood, and they're trim and square, these simple spice shelves and the knife rack have that built-in look. But they just hang on the wall and flank each side of the range. Simple to build yourself!



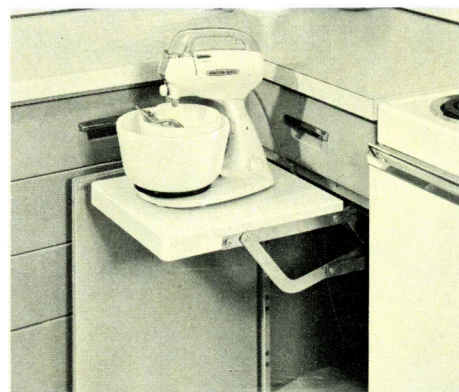
Corners present problems. This one's solved by angling a Flair range *across* the corner. You get efficient use of space, plus an interesting visual effect.



This unusual base cabinet with its "lazy susan" door shelves and "hidden" drawers utilizes nearly every inch of usually wasted corner space.



This "floating island" work-and-cooking center offers a lot of advantages from the standpoint of work efficiency as well as decorative interest. It's made possible by the shallow-depth Frigidaire Drop-In Surface Units — only 3 $\frac{3}{8}$ " deep.



Park your mixer, here. Shelf swings down and in, putting mixer completely out of sight when not in use. Swing shelf out and it locks in place.

“Antique” American kitchen is right up to date on convenience!

Rustic finished cabinets with black iron hardware, a beamed ceiling and a realistic copy of an antique table combine to give this kitchen a very authentic Early American look. Yet it uses the most modern of all appliances — Frigidaire built-ins!

And illumination comes from ultra-modern, ceiling “panel” lighting! The translucent panels diffuse light from fluorescent tubes mounted above. The result is a soft overall lighting, something like daylight but without the glare. The cabinets, too, have their modern “secrets.” That corner wall cupboard has lazy susan shelves. Modern drawer storage for big breakfast cereal boxes in the cooking center, too.

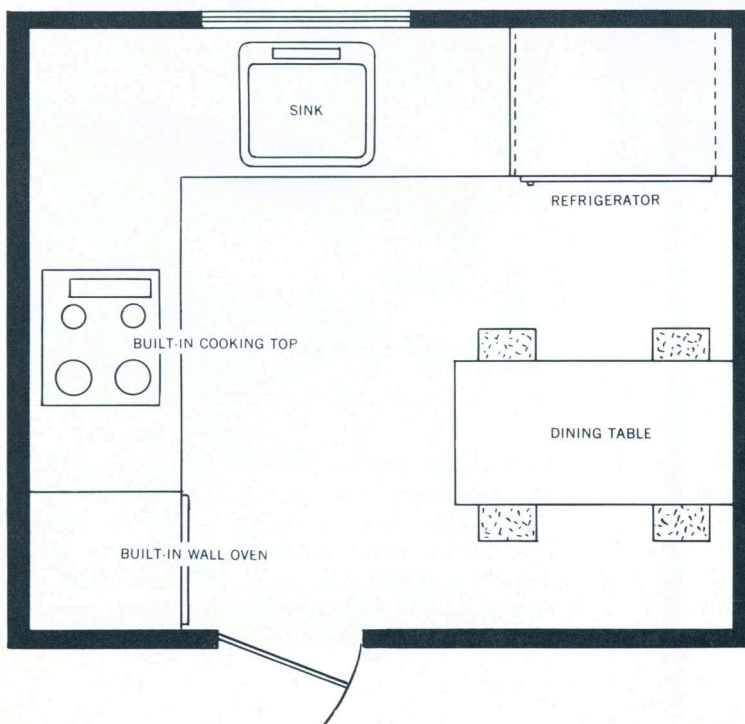
Handsome, built-in copper-lined exhaust hood is embellished by decorative American Eagle medallion. Notice how beautifully the Aztec Copper cooking top blends with the hood. Frigidaire built-in surface units are available in the same colors as Frigidaire free-standing appliances.

Another beautiful blend of color takes place between this wall oven and the rustic toned cabinets in which the oven rests. This is a French Door model — very chic and practical, too. When open, the doors lay back out of the way. And they’re interlocked; you simply pull and push either handle to open and close both doors.

Photographs and kitchen design by American Home Magazine

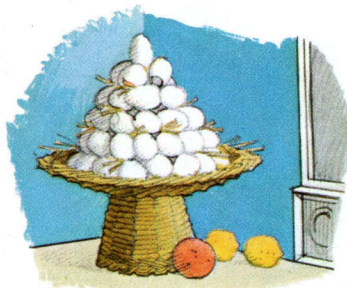


Details, details! How important they are in an Early American or any "period" kitchen. That hutch table with its convenient storage bin below is a copy of an antique. The spice shelf with its potteryware also adds an authentic touch, as does the Hurricane-type ceiling fixture. The whole kitchen reflects the mood if not the history of early America.



Actually this is a very small kitchen. It's just 10' x 10'6". Yet through intelligent planning, use of compact cupboards and appliances, the designers have been able to build in a lot of workspace, an eating area PLUS an authentic Early American look.

strictly decorative ideas!

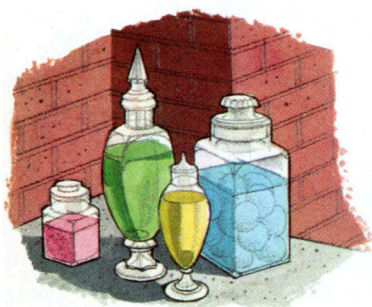


Wooden or glass nesting eggs in a basket make an ideal kitchen decoration. For permanence, glue the eggs together. You can purchase them at most feed stores.

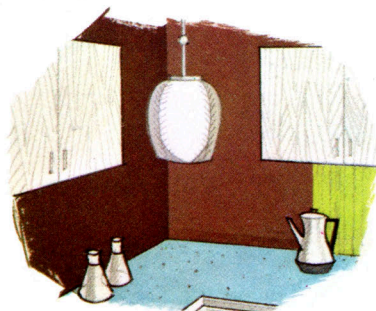
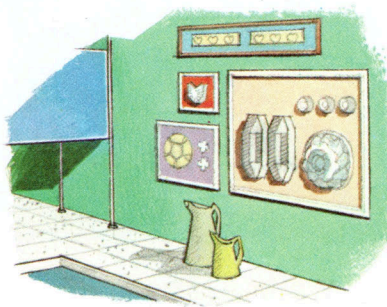
Wall tile can be used in interesting decorative strips. So, you don't have to go to the expense of tiling the entire wall, just those areas subjected to a lot of spattering.



Apothecary jars make decorative containers for cookies, candy, sugar, flour, etc. in the kitchen and soap, detergent, bleaches, etc. in the laundry room.

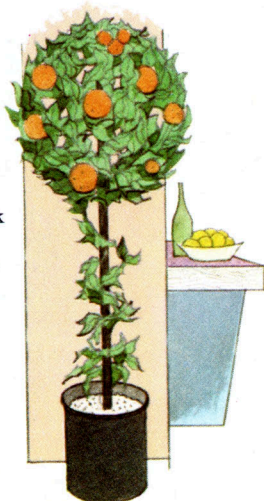


This interesting modernistic wall decoration is made from, of all things, old food molds. They're mounted on a piece of fabric-covered wall board set in a standard picture frame.



Decorative hanging lamp is an attractive addition to nearly any kitchen. Here, it is placed so it eliminates the problem of corner wall cabinets.

Construct an orange tree yourself! Place a broom stick firmly in bucket filled with gravel. Then build your tree structure on the pole using florists' wire covered with florists' tape. Hang artificial leaves and oranges on the structure as you see fit.



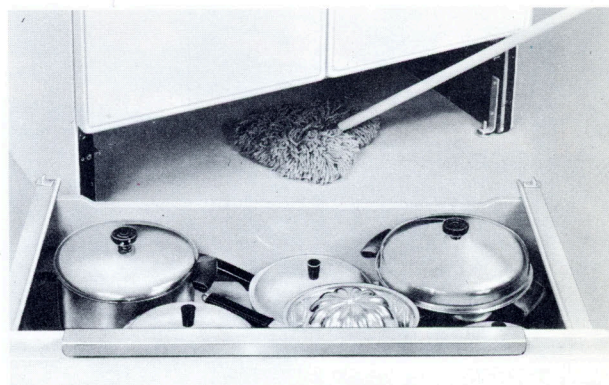
Ways to include a laundry area in a kitchen!



Laundry area "disappears" behind accordion doors (which, in this picture, are opened back out of sight). Same for the cooking center at the other end of the room. And those two laundry hampers roll away in tailor-made ports, when not in use.

Ideas for easier cleaning!

And easier cleaning means more carefree cooking!

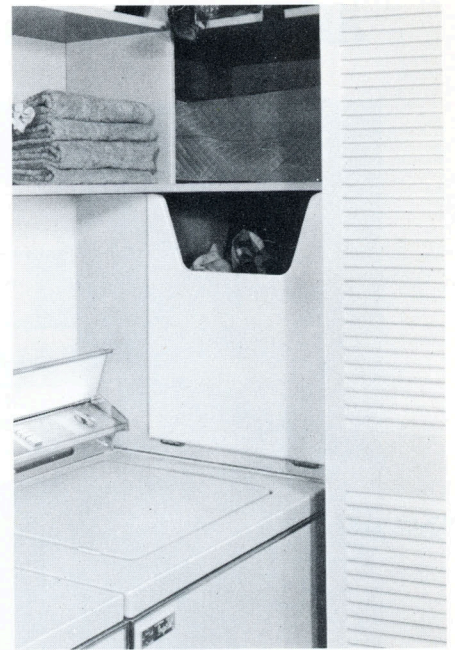


Removable storage drawer and special design of the Frigidaire electric range permit sweeping out underneath without doing a moving job. Raised Spill-Guard edge range top helps keep spills from dribbling down the sides. Surface units are self-cleaning. And they tilt-up so you can take out the porcelain enameled drip bowls for wash-up at the sink.



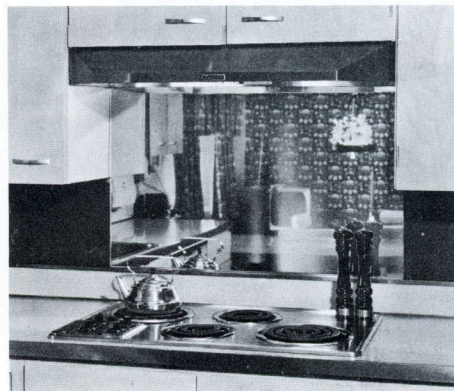
Folding doors need not be solid for hide-away purposes. Just a frame and curtains do the job very nicely.

Hamper drawers let you sort as you store soiled laundry. When you've accumulated a load of, let's say, Wash & Wears, just toss them into the Frigidaire Washer and set the dial. This model has dial-to-order washing for *all* fabrics. Same flexibility in the matching dryer.



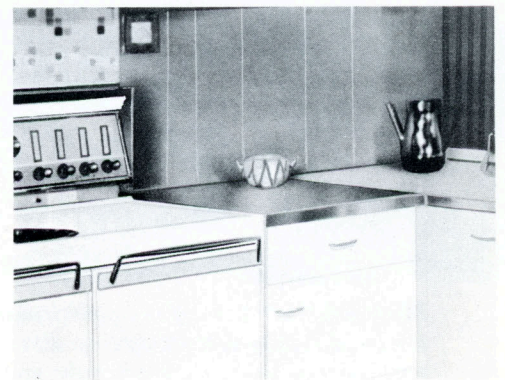
This unusual built-in clothes hamper keeps soiled clothes out of sight. Just drop clothes in through the opening in the top. Open it and clothes tumble out. It's so simple to construct, you may want to build it yourself.

Exclusive Frigidaire Pull 'N Clean oven puts an end to getting down on knees to clean. It slides out for cleaning from the top, while you stand up. Then it glides back for carefree cooking. Available on several free-standing ranges and one built-in wall oven.



Mirror catches the bulk of the spatters. Its polished glass surface wipes clean with a damp cloth. And the mirror makes the kitchen look twice as large as it actually is. You can also get good decorative results with colored glass or mosaic, hard-finish metal or Vinyl floor tile.

Stainless steel "inserts" in the countertop flank each side of the electric range. This gives you a place to set hot pans directly from surface units — and stainless steel is easy to keep clean.



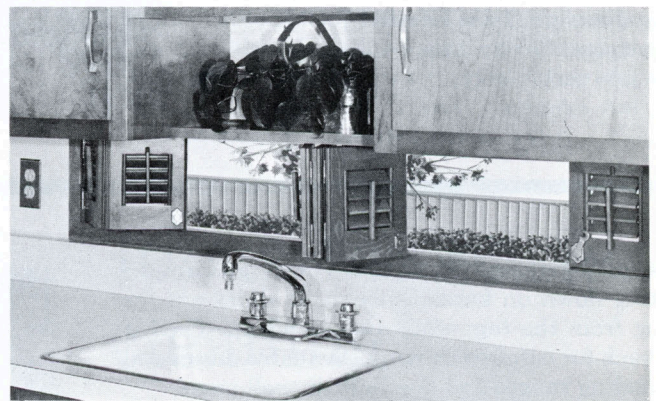
Add extra space and convenience with these bonus ideas!



Island counters have as much as 4 times the "frontage" as wall counters. This one's made even more useful by the inclusion of a sink and large chopping block, plus automatic dishwasher underneath!



Second kitchen? Why not. If you're remodeling or building new, an extra sink and counter aren't very costly. Later, add on whatever else you want — a built-in mixer-blender, or a food waste disposer. Some "extra" kitchens even boast their own refrigerator.



Extra wall space has been gained by installing cabinets right over an existing window. The section of the window left exposed is covered by very attractive shutters which can be adjusted to let light and air in.



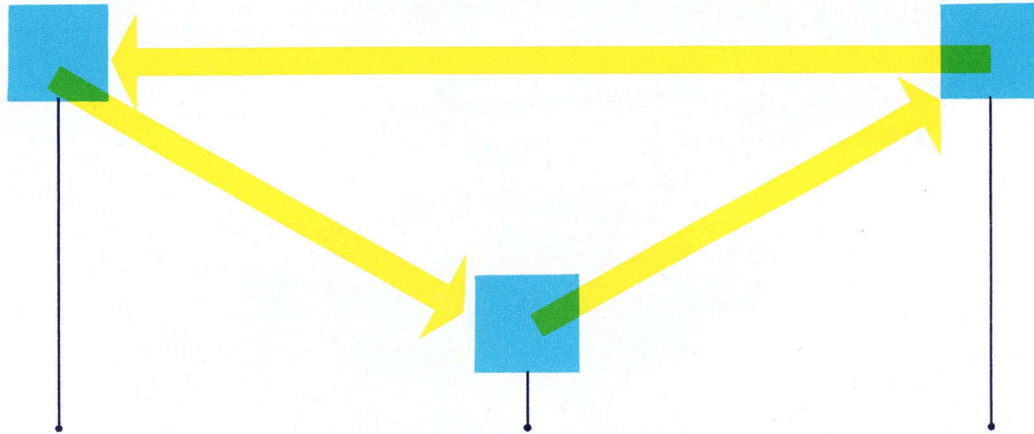
Modified "L" floor plan puts kitchen, family eating area and family recreation area all together. Not visible are sliding glass doors which open on to an outside patio.

The Editors of this publication gratefully acknowledge contributions made by the following in the developing of various kitchens shown here.

American Home	Elkay Manufacturing Co.
Better Homes and Gardens	Formica
Family Circle	Geneva Modern Kitchens
Good Housekeeping	I-XL Furniture Co.
Living for Young Homemakers	Mutschler Brothers Co.
McCall's	NuTone, Inc.
Armstrong Cork Co.	Panelty Co.
Azrock Co.	St. Charles Manufacturing Co.
Daystrom Co.	Whitehall Co.
	Consider H. Willett Co.
	Yorktown Cabinet Co.

Basic ideas of modern kitchen design!

The kitchen triangle — Every kitchen should have 3 distinct areas or groupings of equipment. And ideally, these should be arranged in a triangular pattern with work flowing continuously from right to left.

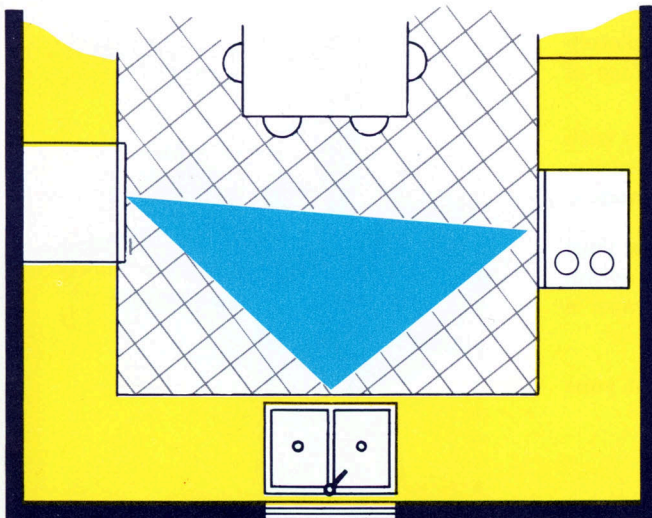


(1) Storage center. Plenty of cabinets, the refrigerator and food freezer should be placed here. And remember, this is the place where meal preparation starts. So, it should also be the starting point in your new kitchen or remodeling plan.

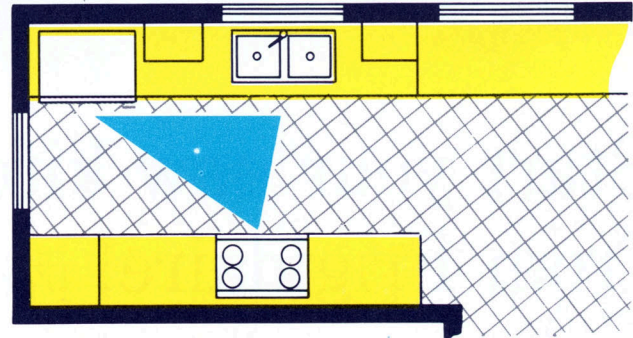
(2) Clean-up center. This should be central to the other two areas because work flows between the clean up area and both the "storage" and the "food preparation" centers. Put sink, food waste disposer and automatic dishwasher, here.

(3) Food preparation center. Use a conventional range, Flair or built-in cooking top and oven; it makes no difference as far as basic arrangement is concerned. And be sure to have counter space plus storage for utensils in this area.

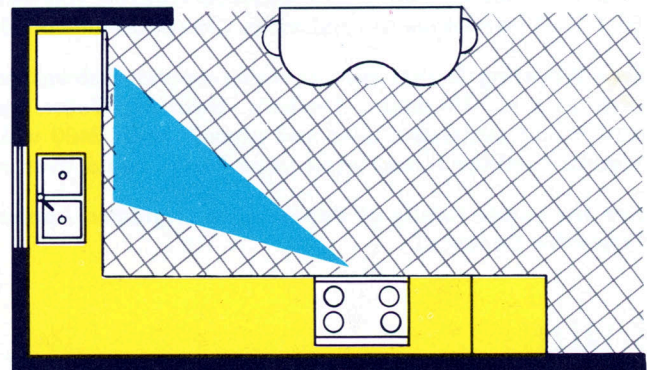
The three basic kitchen layouts. Any overall plan for a kitchen will be influenced by the shape of the room. And some rooms may offer no choice of plan. But most kitchen areas have some flexibility. So it might be well to familiarize yourself with the three basic kitchen layouts so you can make a better-informed choice.



The "U." Here is a pleasing combination of efficiency and visual interest. Also, the "U" provides a natural area for eating table or island sink and work counter. And it lends itself to very small kitchens.



CORRIDOR. This is ideal for long rooms. And it offers quite a bit of work efficiency. It's also advantageous where you have a dining area at one end.



The "L." This is perhaps the most interesting layout. It permits considerable variation of counter arrangement and a natural area for eating. Best in large kitchens.



Start your new kitchen with a *Flair* from Frigidaire! *World's most beautiful electric range!*

Own the loveliest Range of all, Flair! You'll still be completely practical. Flair looks built in. But it's not! Slides into the place of your old electric range in minutes.

And you can't match Flair features anywhere. Eye-level ovens with exclusive glide-up glass doors, eye-level controls you can reach easily, Roll-To-You cooking top and more. Choose 30-inch or 40-inch models.

Free-Wheeling Dishmobile or undercounter dishwasher? Take your pick at your Frigidaire Dealer's. Swirling Water washing action scrubs and sanitizes dishes and utensils with 2400 walls of water a minute — water hotter than your hands could ever stand!

See the whole family of dependable Frigidaire Appliances at your Frigidaire Dealer's!



FRIGIDAIRE
PRODUCT OF GENERAL MOTORS

Frigidaire reserves the right to change specifications and prices or discontinue models, without notice.

